

# NESTOR MARTIN

## WOODBBOX® TECHNOLOGY S - H 33 SE



INSTALLATION, USE AND MAINTENANCE INSTRUCTIONS

Woodbox®  
TECHNOLOGY



## ABOUT THESE INSTRUCTIONS

These instructions cover the Nestor Martin range of Harmony (H) and Stanford (S) Woodbox® stoves.

It offers installation and operation information for the range of HARMONY H13, H23, H33, H43. STANFORD S13, S23, S33, S43. In some cases you find references in this document to the model size rather than the models exterior design. There are four sizes of appliances, 13, 23, 33, 43. The 13 is the smallest and the 43 the largest. Although the exterior castings change between model ranges, for example the Harmony 23 and the Stanford 23, the internal workings are the same.

### Model Identification

There is a stove identification plate fitted to the stove giving the details of each appliance.

This can be found in a number of places on the stove depending upon the model and date of manufacture:

1. A label fitted on the rear of the stove towards the boom of the rear heat shield.

## WARNINGS

Due to the high operating temperatures of this appliance it should be located away from pedestrian traffic and away from furniture and draperies. Mats and rugs put in front of the stove should be fire proof and secured to prevent the possibility of tripping.

Do not store paper or wood near the appliance. Do not store or use petrol or other flammable vapours and liquids in the vicinity of this or any other heating appliance. Do not use aerosol sprays near the stove when the stove is alight. Do not burn anything but natural wood on this stove.

Advise all persons as to the stove's high surface temperatures. If it is possible for children or infirm adults to come into contact with the stove, fit a suitable fire guard.

It is imperative that all air passageways into, out of, and within the appliance are kept clean. All permanent ventilation into the room provided for the stove must remain clear and unobstructed at all times. Consideration must be given to the need for extra ventilation if another heating source needing air is to be operated simultaneously. If an extraction fan is proposed to be fitted to a connecting area of the house, after the stove has been installed, professional advice should be sought from a qualified engineer.

The user should be advised that the appliance should be inspected regularly and the chimney cleaned at least annually. More frequent cleaning may be required and the advice of a qualified chimney sweep should be sought.

Your attention is drawn to the precautions and responsibilities under the Health and Safety at Work Acts, and whatever new legislation being introduced during the life of this document. Especially to the possibility of disturbing asbestos when disturbing structures in older properties. Also the caustic nature of fire cement. The personal risk of injury when moving heavy items with possible sharp edges.

Improper adjustment, alteration, maintenance or the fitting of replacement parts not recommended by the manufacturer can cause injury or property damage.

Do not operate the stove with faulty seals or damaged glass.

## 1. INTRODUCTION

**IMPORTANT! All local regulations, including those that refer to national or European regulations, must be applied when installing this device.**

The way the stove is installed will decisively affect safety issues and its correct operation.

It is important to install the stove correctly. For the correct installation of the stove and chimney, we recommend the installation be performed by a professional.

Please read this entire manual before you install and use your new room heater. Failure to follow instructions may result in property damage or bodily injury.

## 2. INSTALLATION

If your stove is not properly installed, injury or property damage may result. For your safety, follow the installation directions. Contact local building control or qualified installer about restrictions and installation requirements in your area.

**Warning: Do not connect this unit to a chimney flue serving another appliance. The unit must be installed according to all local codes. Installations other than those specifically covered herein have not been confirmed by test and are not covered by the certification**

### 2.1. Chimney.

The chimney is a vital part of your stove installation. A properly built masonry chimney will assure a consistent draft under a variety of weather conditions. (A smoking stove is almost always caused by a chimney problem)

All chimneys must be installed according to the local building regulations in the case of a masonry chimney, (Nestor Martin recommend that at all installations into a masonry or clay lined chimney should be lined using twin wall stainless steel liner) or according to the chimney manufacturer's instructions in the case of a factory-built metal chimney. See the chimney manufacturers' instructions for exact specifications. Existing chimneys must be inspected before installing your stove. Consult your local building department for chimney code requirements. A masonry chimney should have a approved liner. This liner must not have broken or missing pieces. Some non-code masonry chimneys may be brought up to code by being relined. (Consult your dealer or qualified chimney sweep.) Factory-built metal chimneys should also be inspected, first for creosote deposits (which should be

removed), and then for the integrity of the stainless steel liner. Look for obvious bulges in the lining which may indicate the need to replace that section (use a bright flashlight). Also inspect the attic to see that the chimney has proper clearance to combustible framing members.

The chimney or vent shall be designed and manufactured to develop a flow sufficient to completely remove all flue and vent gases to the outside atmosphere. The venting system shall satisfy the draft requirements of the connected appliance in accordance with the manufactures instructions. The location, section and height of the chimney condition the draft.

#### 2.1.1. Chimney Height requirements.

We recommend that the chimney be:

1. at least 100 cm higher than the highest part of the roof opening through which it passes,
2. and at least 60 cm higher than any part of the roof within 300cm, measured horizontally.

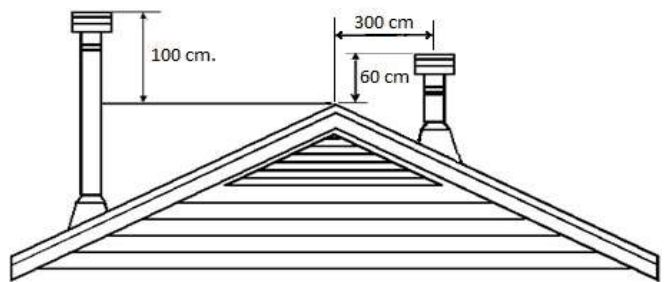


Fig. 1

#### 2.1.2. Draft requirements

The appliance is merely one component of a larger system. The other equally important component is the chimney. This is necessary for achieving the required flow for safety removing unwanted combustion by-products from the appliance. If the chimney design does not promote these ends, the system may not function properly.

The recommended draft requirements for your stove is no less than  $-15 \text{ pa}$  ( $-0.048''$ ) and no greater than  $-25 \text{ pa}$  ( $-0.12''$ ).

**OPERATION OF YOUR STOVE WITH A DRAFT GREATER THAN  $-30 \text{ Pa}$  ( $-0.14''$ ) CAN POSSIBLY CAUSE DAMAGE TO THE STOVE AND VOID THE WARRANTY.**

#### 2.1.3. Summary of rules

We shall now provide a summary of the rules that should be followed when building a chimney:

- Use resistant and non-combustible materials for the connection between the appliance and

the chimney, which are protected if possible against rust (enamelled steel, aluminized steel, stainless steel, ...)

- Choose the most vertical route possible.
- Do not connect several devices to the same chimney.
- The conduit should not come to an end near buildings and must be higher than the nearest obstacle if there is another building nearby.
- The internal walls must be perfectly smooth and free from obstacles.
- Avoid bottlenecks where pipes join the brick chimney.
- Ensure that the joints of the pipes are well sealed to avoid air entering through cracks.

## 2.2. Installation of the stove.

1. Position the unit no closer than the minimum clearances to combustible materials (see safety chapter). Reposition unit if necessary, being careful not to move closer than the minimum clearances.
2. Position the unit on the floor at the proper clearances. If the floor is made of combustible material (for example, parquet) it must be protected with a slab of fireproof material, placed under the stove and around it. The size should be such that it protrudes from the appliance: 20 cm back and sides and 50 cm front.
3. Install the stove to the fireplace, sealing it properly.
4. The stove can never be connected to air ducts or a ventilation system.
5. Appropriate firebreaks, firewalls must be installed when a section of the chimney passes through floors and/or ceilings. The insulation will be at least 50 mm thick from the flue to the structure. It is necessary to protect the walls with wall protectors when the chimney is not at the indicated sage distance and damage may occur. (See Fig. 2.).

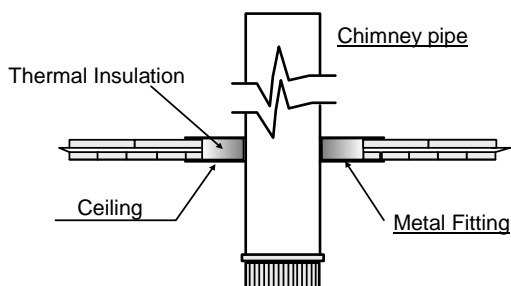


FIG: 2

**DO NOT CONNECT THIS UNIT TO A CHIMNEY FLUE SERVING ANOTHER APPLIANCE.**

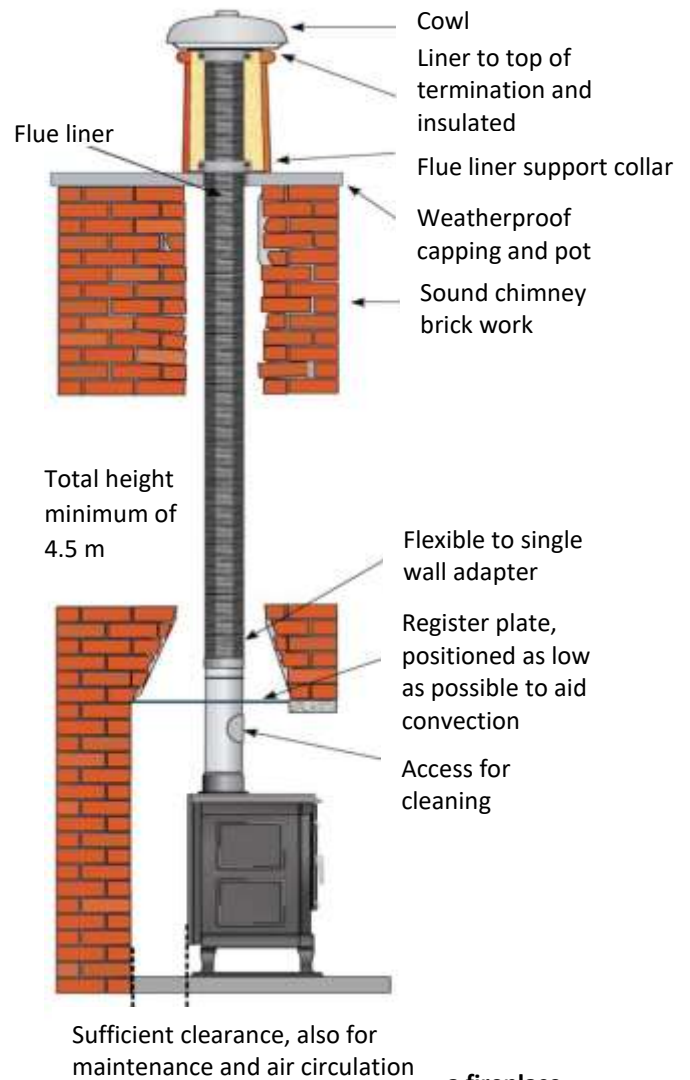


Fig. 3. Chimney connection to a fireplace.

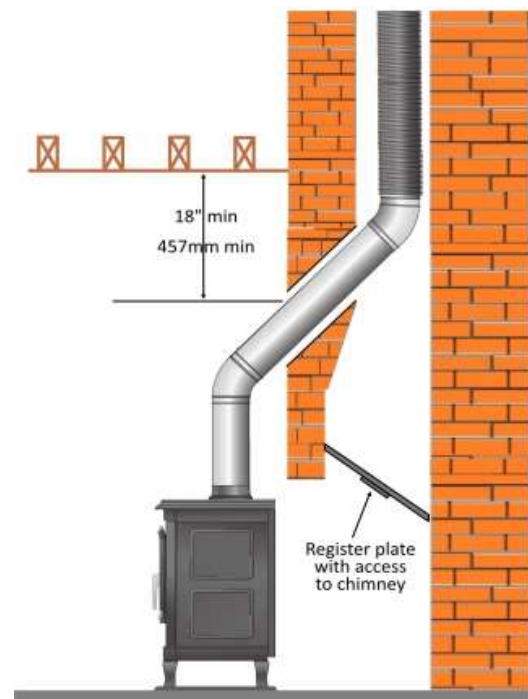


Fig. 4. – Chimney connector enters chimney above the fireplace

## 2.3. Above a Fireplace.

In this type of installation, the chimney connector rises from the stove, turns no greater than 45°, and then

goes into the fireplace chimney. The liner of the fireplace chimney should extend at least to the point at which the chimney connector enters the chimney. Follow all the guidelines for installing a chimney connector into a freestanding masonry chimney, and pay special attention to these additional points:

- Double check the connector clearance from the ceiling: 18" (45 cm) minimum.
- The fireplace damper or register plate must be closed and sealed to prevent room air from being drawn up the flue, thereby reducing the draft.

However, it must be possible to re-open the damper or have an access plate in a register plate to inspect the chimney.

### 3. USE

Once your stove has been installed and connected to the chimney, you are ready to light the fire.

Before lighting your stove for the first time, please take time to become familiar with the different control systems and parts of the unit, how to choose the wood, how to light it and use it on a daily basis.

#### **Ensure that the ash pan is empty.**

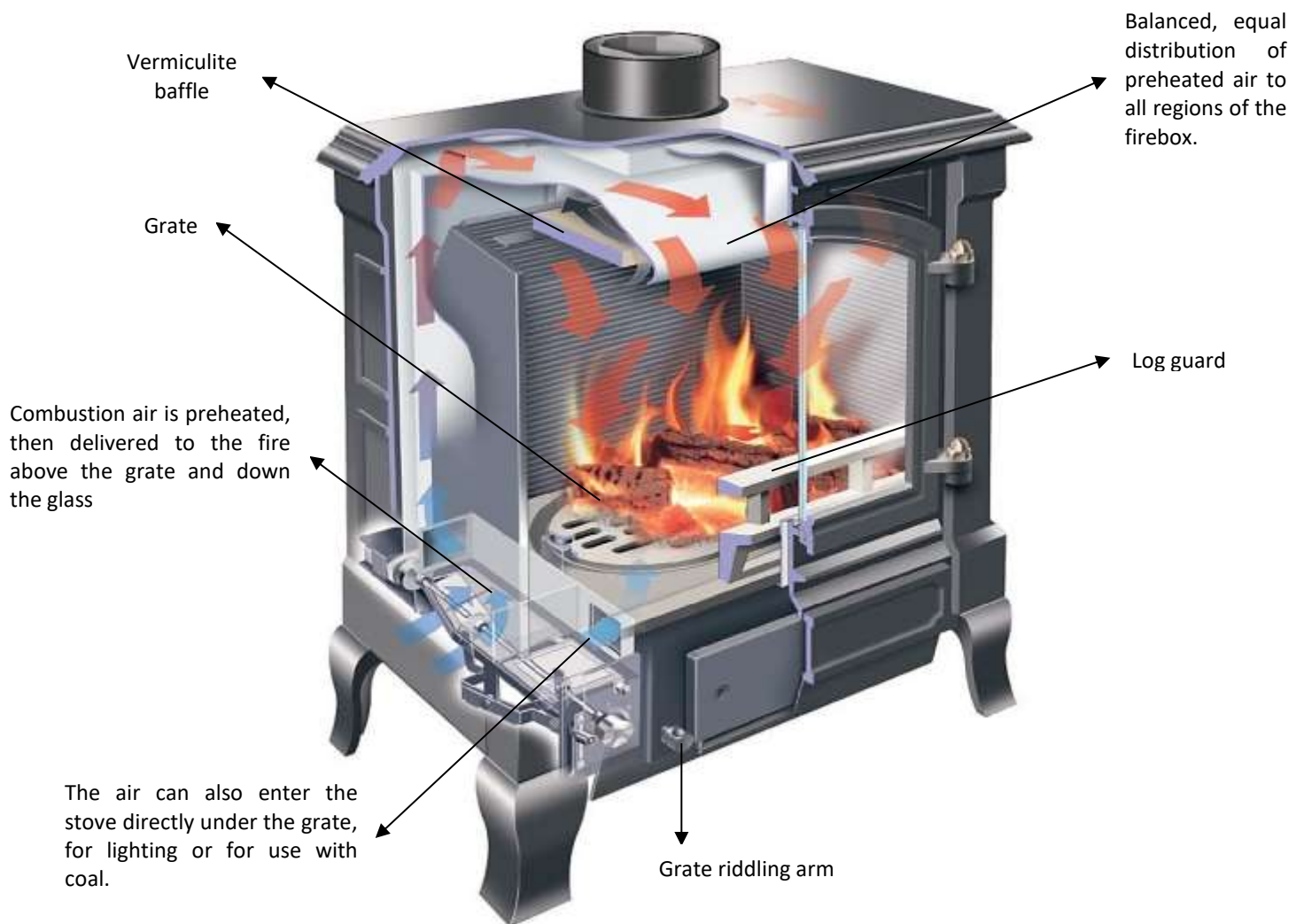
ALWAYS KEEP IN MIND that the stove generates heat and, therefore, keep children, clothing, furniture... at a distance to prevent burns from direct contact with the appliance.

Below, we have included some advice on your stove and on its use. Please read with care.

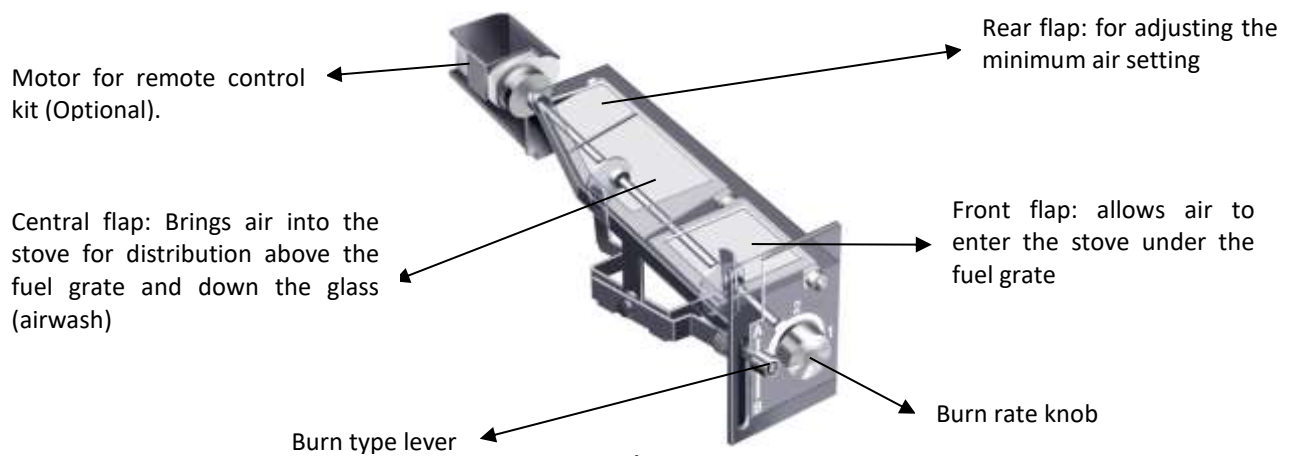
#### **3.1. THE WOODBOX® COMBUSTION SYSTEM**

The Woodbox® system uses a balance of preheated primary air, secondary air and natural flue draft in a process of combustion and post-combustion, to obtain extremely high efficiency and total controllability of the fire.

The Woodbox® stoves, are equipped with a variable flap mechanism to control the air intake with precision, according to the type of combustion and the desired tempo of the fire. The controls allow you to open these flaps manually. An optional remote control kit allows you to open and close these flaps automatically.



**Fig. 6.- Diagrammatic view of a Woodbox® stove (without the Catalytic Hybrid Woodbox components fitted)**



**Fig. 7**

**Fig. 10. Optional stove starter section with draught control**

### **3.3. USING THE AIR CONTROL.**

Your stove will have one of these control panels, allowing you to adjust both: the volume, by rotating the round knob, and the direction from which air enters the stove, by moving the lever vertically up or down.

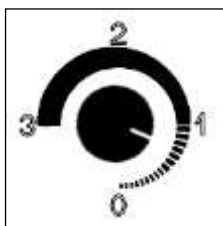
**Always use the tool supplied with the stove when adjusting the controls.**

### **S/H33-43 MODELS**



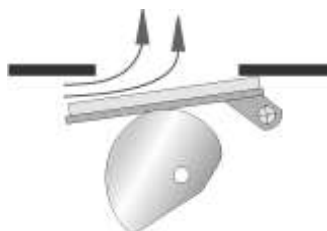
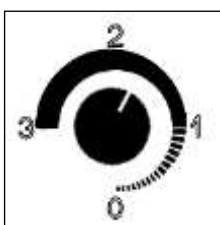
**Burn rate knob.** Governs the amount of air entering the stove. Allows you to control the tempo of the fire. As the knob is rotated counter-clockwise, the cam progressively opens the air flap to increase the amount of air entering the stove.

Low operation



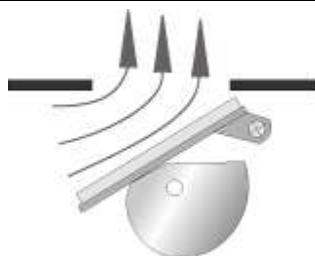
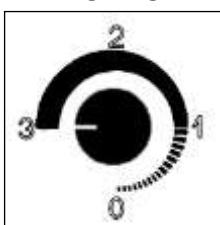
At low setting, the flap is barely open as to reduce the intake of air

Normal operation



At normal setting, the flap is about half-way open

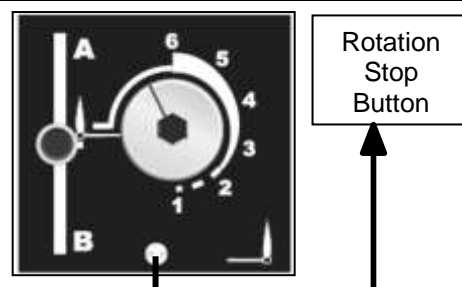
Lighting



Generally, setting "3" or "6" is only used for lighting

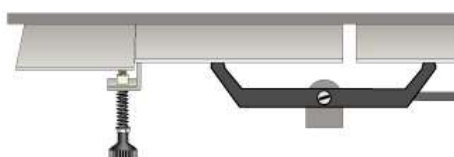
### Rotation Stop Button

To enable the Air Volume Control knob to be rotated to the lighting position, on certain models, press the rotation stop button inwards then rotate the Air Volume Knob.



**Burn Type Lever:** Controls the direction of the air flow, either above or below the grate; Adjust according to the type of combustion

Lighting



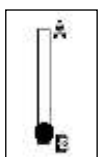
Burn Type Lever in mid position: Providing maximum air above and below grate for ignition

Wood



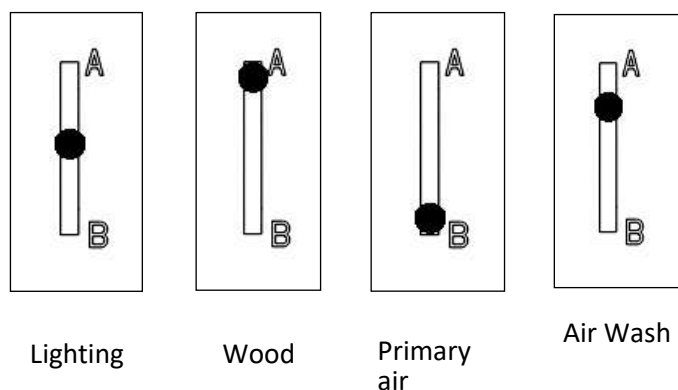
Burn Type Lever raised (position "A"): Providing top air for wood burning

Primary Air

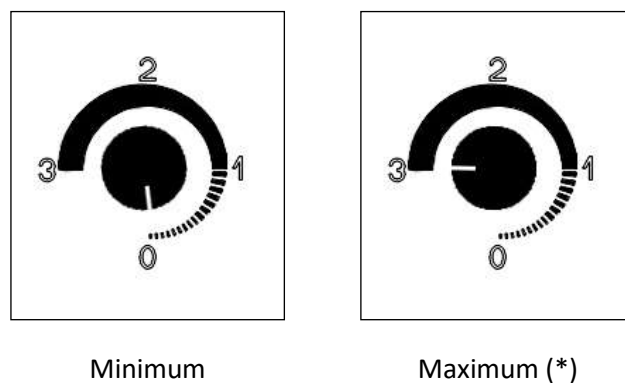


Burn Type Lever lowered ( position "B"): Providing Primary air for restarting fire before loading

### 3.3.1. Burn types



### 3.3.2. Burn rates



### 3.3.3. Examples of air settings

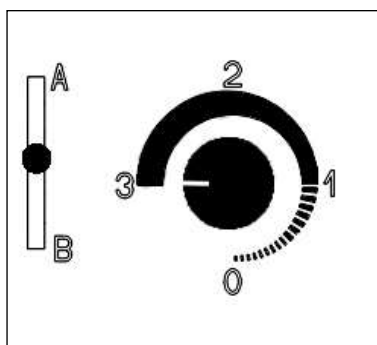


Fig. 11. Lighting and reloading

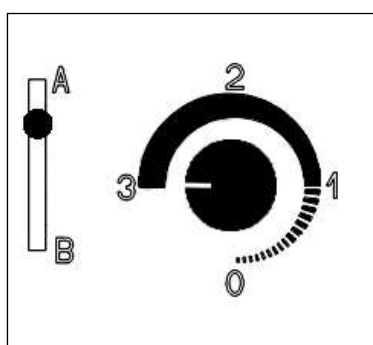


Fig. 12. Air wash.

(\*) On certain models, press the rotation stop button inwards to enable the maximum burn rate to be achieved.

### 3.3.4. Minimum air setting.

The adjustment knob for the minimum air intake can be found underneath the stove, on the air flap assembly. It is factory set. This knob allows you to increase, decrease or completely close the permanent air intake.

Adjust this knob according to your chimney's draught, when the chimney is at its operating temperature and using an accurate flue draught gauge. See section 2.1.1, Chimney height requirements, for the recommended flue draft.

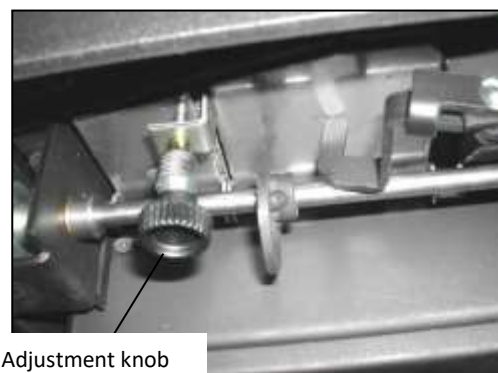


Fig. 13

*Minimum air screw open*  
(this is the factory setting, suitable for a normal flue draught).



*Minimum air screw closed or nearly closed*  
(in the case of an excessively strong flue draught)



### 3.3.5. Remote Control (optional)

This stove has the option of remote control.

#### Fitting the remote control motor:

At the rear of the appliance you will see the motor fitting bracket. This incorporates a magnet and the mechanism friction plate. The friction plate is hinged. To fit the motor, this friction plate needs to be detached from the magnet and swing to the left.

The motor can now be slipped into place. The magnet retains the motor.

Connect the electrical lead to the receiver box and place the receiver box in its holder.



Fig. 14



Fig. 15



Fig. 16

Detailed instructions on the use of the remote control can be found with the remote control kit.

### 3.4. LIGHTING

**IMPORTANT!** The surface of your device is protected by a coat of special anti-heat paint that resists high temperatures. When lighting the fireplace for the first few times, the said paint may emit some fumes. This is normal and is due to the evaporation of certain components of the paint while it adapts to the heat. We, therefore, recommend ventilating the room until this phenomenon ceases to appear.

It is very important that the first time the heater is lit, it is done so slowly. This is for the following reasons:

- Stabilise cast iron parts.
- Harden the joint sealant putty

We recommend that the first loads of fuel be small and keep the stove on for a few hours at this intensity

**The stove must be closed at all times during combustion to prevent smoke from leaking out. Only open to add fuel.**

**ATTENTION!** During the operation of the stove, the metal parts can reach high temperatures. Protect your hands with fire resistant gloves when touching these parts.

Use the tool provided to operate the stove's air controls, as well as to open the ashpan door.

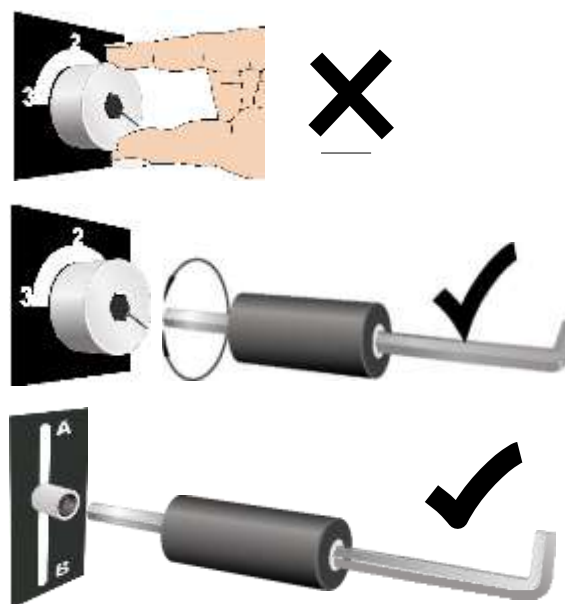


Fig. 17

#### Steps to light the stove:

1. Be sure the ash drawer is closed and secured. Slide the Burn Type Lever to the centre position (See the setting on fig.11).
2. Open the Burn Rate Knob all the way by turning to the left. This knob may be turned manually or by pressing "ON/HI" on the remote control (optional). (See the setting on fig. 11).

Fig. 18

3. Place one or two approved fires lighters in the bottom of the stove. Add a small amount of dry kindling loosely on top of the fires lighters. Light the fires lighters. The flame will ignite the kindling while helping to preheat the chimney and establish an effective draft.

It is advisable to leave the stove door slightly ajar for a few minutes during ignition to aid combustion and prevent condensation on the glass. Never leave the stove unattended with the door open.

4. Once the fire has taken hold, gradually add larger pieces of wood until it is burning steadily.

5. When the fire is well established, slide the Burn Type Lever to the top position for normal wood operation ("A"). Then adjust the Burn Rate Knob to the desired heat output, either manually or with the remote control.

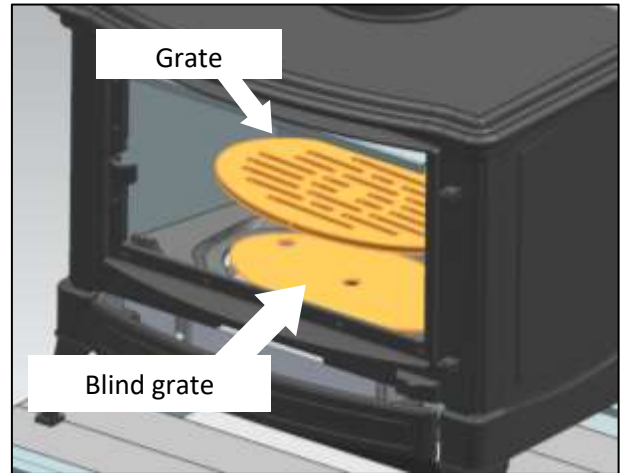


Fig. 20

In models 13, 23 and 33, the air-inlet cut off plate is necessary to obtain the results accredited by the Official laboratory that has tested this product.

To remove the air-inlet cut off plate, first remove the vermiculite starting from the sides and the back, the lower and upper baffle. Remove the air-inlet cut off plate by removing the nuts that hold it in place, and then put the baffles back on, the rear and side ones. See the section 11 on "Vermiculite installation".

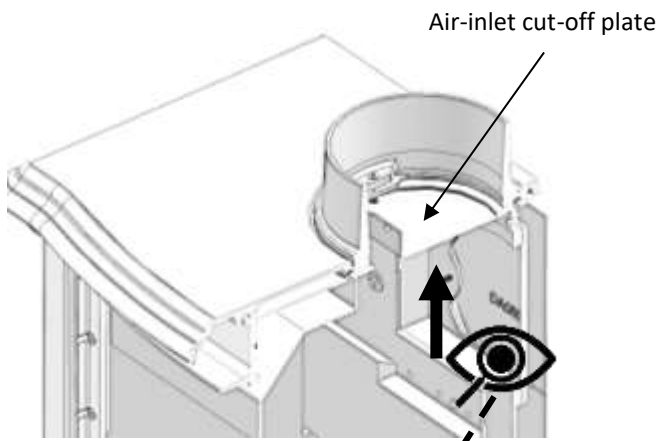


Fig. 21

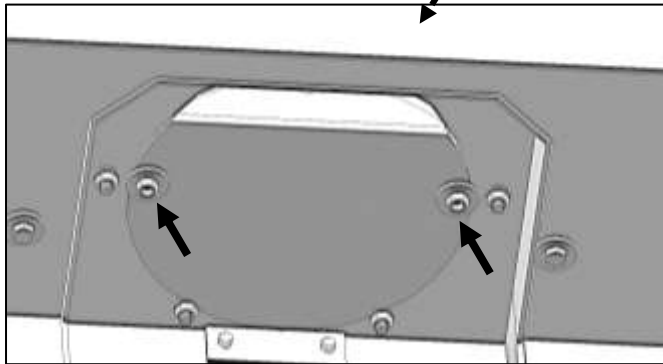


Fig. 22

### 3.5. RELOADING THE STOVE

To refuel the stove, first slide the Burn Type Lever to its mid- position, then rotate the Burn Rate Knob to maximum. Let the fire “liven up” for about one minute.

Open the front door slightly and hold it in this position for about 30 seconds, or until the stove is drafting well . Then open the door fully and rake the embers toward the front of the stove, spreading them evenly. If there are logs that are only partially burned, move these to the front as well.

Add dry, seasoned wood. If the ember bed is nearly depleted, it may be necessary to leave the Burn Rate Knob on the high setting for a while to re-establish a lively fire. Once the fuel is burning briskly, slide the Burn Type Lever back to Position A ( wood) and turn the Burn Rate Knob down to the desired setting.

### 3.6. OVERNIGHT BURNING

The Burn Rate Knob allows you to adjust the size of the air intake and control the tempo of the fire.

- \* Turning the knob to the left increases airflow, producing higher flames and a cleaner burn.
- \* Turning the knob to the right decreases airflow, lowering the flames and extending burn time.

If you fill your appliance with wood and close the air supply, you will produce smoke and tar and the window glass will become dirty.

To keep the glass clean and burn overnight without producing smoke, we recommend you build up a bed of charcoal, which will burn cleanly for many hours with the air flow reduced to a low setting, the depth of charcoal will depend on the length of time you wish to run it for. Do not shut the air control completely but leave it slightly open, depending on how the chimney draws, to achieve slow burning for a maximum of 8 hours (with dry, good quality wood such as oak...).

With a well-drawing chimney, the air control will need to be closed further than with poor drawing chimneys. If your window glass becomes tarred after a low burn, you may burn the tar off of it by using the integrated air wash system. To do so, slide the Burn Type Lever between position A and the middle position as to let in a small amount of under-grate air, and turn the Burn Rate Knob to maximum. (see air settings fig.12).

### 3.7. ASH REMOVAL

**IMPORTANT! Only handle the ash pan when the stove is cold. Always avoid opening the ash-pan if your stove is in operation.** Empty the ash pan regularly to prevent the ash from spilling over. Do not allow ash to build up and touch the under side of the grate. A layer of ash left over the grate when burning wood will protect the grate, retain heat, and promote clean combustion.

To clean the ash from the stove, use the poker provided. Besides, the grate can be riddled to encourage ash to fall into the ash pan. The riddling rod is located between the Plexus fascia panel and the ashtray door (Fig. 23). With the tool provided, you can operate the knob pulling forward and pushing back to shake the grill.

**If your model has a blind grate, remove it from the stove before cleaning the ash (fig. 20).**

To remove the ash pan from the stove, take the provided tool and pull gently of the ash pan. This tool for removal of the ash pan should not be used to carry the ash pan. **Use gloves and hold the ash pan on both sides.**

Place ashes in a metal container with a tight fitting lid. The closed container of ashes should be placed on a non-combustible floor or on the ground, well away from all combustible materials, pending final disposal. Ashes should be removed from ash pan when cold.

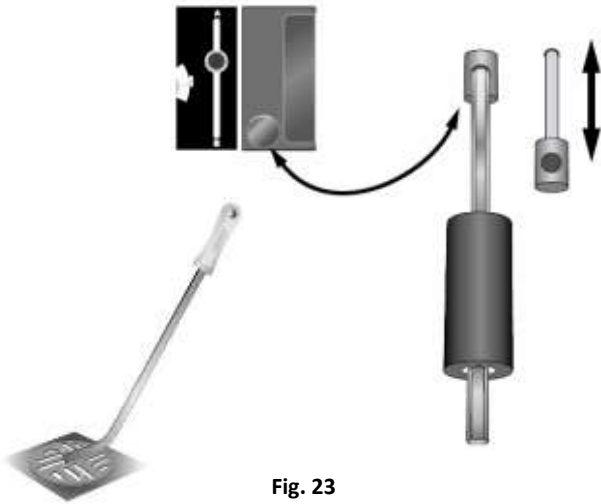


Fig. 23

### 3.8. FUELS

#### Recommended solid fuels:

Hardwood : hornbeam , beech , oak , fruit tree wood , birch.

#### Unsuitable solid fuels:

Fir wood , moist or unseasoned wood , chemically treated wood , wood chips , wood pellets , petroleum coke.

Do not burn trash in your appliance.

Do not use wood washed ashore from the sea , as the salt content will react during combustion and release acids that damage iron and steel.

#### Important notes:

Your stove is approved for use with properly seasoned wood only.

Do not burn particle board scraps or pressed logs containing bonding agents , as these can damage metal parts.

Green or uncured wood causes poor performance and excessive creosote build-up. Its heating value is limited.

Do not overload the stove or use kindling wood or mill ends as primary fuel , as this may cause over-firing (excessive temperatures beyond the stove's design limits). Damage caused by over-firing is not covered under warranty.

#### Warning:

Do not use petrol , lighter fluid , kerosene , or other flammable liquids to start or freshen a fire. Keep all such liquids well away from the stove while in use.

### 3.9. WOOD

Logs of correct size for the stove allow for better stacking, filling and operation of your stove (see table below). Use dry wood which, by definition, is wood which has been dried under cover for more than 18 months so that the logs contain less than 20% moisture.

Stove model	Ideal Log Length	Maximum Log Length
Size 13	8 inches, 200 mm	12 inches, 300 mm
Size 23	8 inches, 200 mm	13 inches, 350 mm
Size 33	9 inches, 220 mm	15 inches, 380 mm
Size 43	10 inches, 250mm	17 inches, 450 mm

#### Heating and Humidity

When air in a closed building is heated , its relative humidity decreases. This can dry out wood and other combustible materials , lowering their ignition temperature and increasing fire risk. To reduce this hazard , provision should be made to replenish moisture in the air whenever a building is heated for extended periods.

#### Fuel Quality – Use Dry Wood

The best and easiest firewood to light is always dry, seasoned wood.

Using dry wood minimizes creosote build -up , improves combustion efficiency , and increases heat output.

Damp or unseasoned wood has poor heating power , is difficult to ignite , burns inefficiently , and produces excessive smoke.

Damp wood also leads to deposits of tar and soot in the chimney flue and on the stove's glass door.

#### Flue Gas Temperature

Maintaining a high combustion temperature is the most important aspect of stove operation.

At the correct temperature , soot and tars ( hydrocarbons ) are burned instead of condensing as creosote inside the stove , glass , or chimney.

Running the stove at maximum air setting for long periods is counterproductive . Excess air passes too quickly through the combustion chamber , preventing it from reaching and holding proper operating temperature.

With experience , operators will quickly learn the optimum setting for maximum heat output without needing surface or flue thermometers.

High combustion temperatures are the secret to clean glass operation. When loading wood, add one or two logs at a time, depending on size. Loading the appliance full of damp wood on a low fire is certain to cause poor combustion efficiency, resulting in tar and dirty glass. It is recommended that you heat your stove to at least 205°C (400°F) before reducing the air controls. This procedure should always be carried out after reloading. A simple guide to this is when the new charge of fuel is burning vigorously.

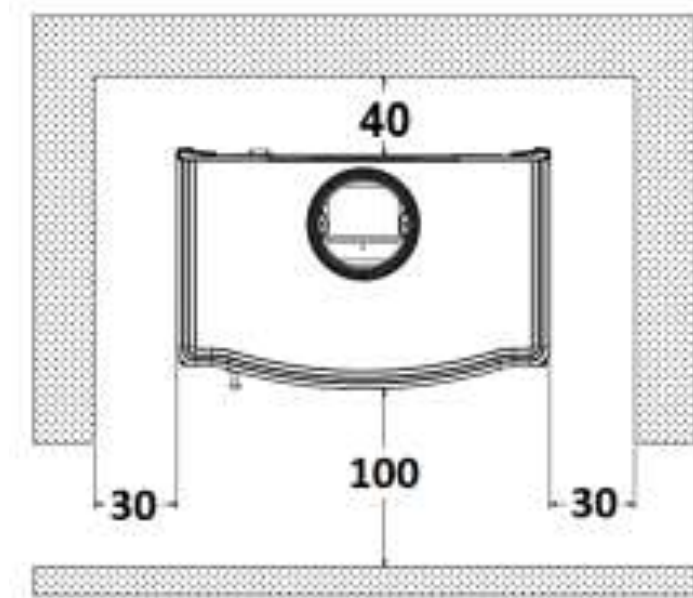
#### Storage time for wood

Wood supplied in ready-cut lengths stored immediately under a ventilated shelter dries quicker than wood stocked in high piles. Quarters (split wood) dry quicker than round logs. Wood which is too small to split must be drained, by removing some of the bark. Round logs left in the open for more than a year end up rotten. The drying time for the fire wood should be at least 18 months to 2 years. This period can be shortened (12 to 15 months) if the wood is cut to the right length and immediately stored under a ventilated shelter.

## 4. SAFETY

Notify the elderly, as well as children of the high surface temperature of the stove in order to avoid burns. Supervise children when they are in the room where the stove is placed and use a suitable fire guard for it. It is essential that the controls of the stove, as well as the chimney pipes are always clean and in good condition. The stove must be checked before use, as well as the chimney cleaned at least once a year. You should do this operation more often if the stove does not turn on regularly, the installation is poor or low quality fuel is used.

**ATTENTION: The stove is very hot during operation. Do not touch the surface.** Furniture and other combustible materials must keep the necessary safety distance (Fig. 24).



Safety distances S/H-33 models (cm)

Fig. 24



Do not overload the stove. If any part of the stove or chimney begins to glow or change colour, it means that you are overheating the stove. If you detect overheating of the stove, turn it off to avoid damaging the cast iron parts.

Please, follow these recommendations:

- Do not load more fuel.
- Open the door of your stove slightly so that more air enters. This will initially cause the flames to grow and consume the fuel more quickly, but it will also cool the chimney and reduce the draft, cooling the stove.

#### **Unattended fires**

Many fires have happened by having a stove on and unattended for a long period of time. These fires usually occur because there are combustible materials near the stove, they heat up more than normal when the stove fire is oversized. The intensity of the fire depends on several factors.

One of these factors is air. Usually increasing the air increases the fire. In the same way that if we increase the intensity of the fire, the air will also increase.

The air can also be affected by external factors such as wind, outside temperature, air currents ... if one of these factors changes, the air in the stove will increase. This will cause temperatures to rise dangerously, which can cause nearby combustible materials to ignite.

Closing the air control button will not ensure that this cannot happen. You must exercise extreme caution if the fire is left unattended.

#### **Procedure to follow in case of a chimney fire**

- A. Prepare to evacuate to ensure everyone's safety. Have a well-understood plan of action for evacuation. Have a place outside where everyone is to meet
- B. Close all the air controls on the stove.
- C. Call the fire department. Have a fire extinguisher handy.
- D. After the chimney fire is out, the chimney must be cleaned and checked for stress and cracks before re-use. Also check combustibles around the chimney and the roof.

Contact your local municipal or provincial fire authority for more information on how to handle a chimney fire. It is extremely important to have a clear plan on how to handle a chimney fire.

## **5. CLEANING & MAINTENANCE**

### **WARNING: DO NOT CLEAN STOVE WHILE HOT.**

Always keep the area around the unit clean and clear of furniture and other objects. Keep all furniture and drapery a minimum of one metre from the stove. Clean the stoves surface using light strokes of a real bristle paint brush. Stoves with a cast black finish should never be cleaned with a cloth as the texture of the paint will abrade and collect lint from the cloth which will be almost impossible to remove. Stoves with an enamel finish should be cleaned with a damp cloth, or very gentle use of a cleaner recommended for enamel finishes. In case of condensation, clean the affected areas before they dry.

Inspect the entire unit frequently for proper operation, fit and soundness of parts. If any malfunctioning, cracked, broken, or loose parts or other problems are noted, contact your dealer or qualified serviceman to inspect and repair the unit. **DO NOT OPERATE THE UNIT IF INSTALLED OR FUNCTIONING IMPROPERLY.**

#### **Seals**

Check the fit and seal of the doors and ashpan door frequently. For proper operation an airtight seal must be maintained around these openings. If the seal is not tight, inspect the gasket. If the gasket needs replacement, contact your dealer. If the gasket is in good condition, check the closure latch screws; if these are loose, adjust the door handle (Fig. 26).

#### **Glass**

Your stove is fitted with 4 mm ceramic glass. Properly operated, your glass door will not get coated with thick tar like conventional stoves. If this does occur, you may have to resort to using a glass cleaner. However, by using dry wood, much of the tar on the glass will burn clean, when the appliance is run at high temperature. Clean the ceramic glass when cold, using commercial products sold for this purpose, or warm water with a drop of vinegar.

The glass used in your stove is ceramic, which can only be broken due to a strong blow or a bad use. Inspect the glass regularly. If it detects that it is damaged, replace the glass using a new glass seal kit immediately.

**WARNING: Replacement of damaged glass must be done with original parts supplied by your dealer. Use of other materials could cause a safety hazard and void your warranty.**



**CAUTION: NEVER OPERATE YOUR STOVE WITH BROKEN GLASS.**

Replacement of the glass:

1. Open the door. Lift off the stove body.
2. Remove the 4 fixing screws and remove the the glass and old seals.
3. Replace the seals and glass.
4. Install the 4 screws. Do not over tighten the screws.

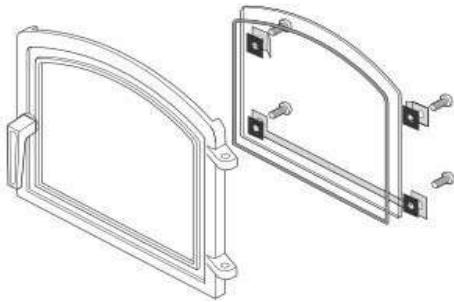


Fig. 25

**Note: When replacing glass, always replace glass seals**

Any maintenance or adjustment, not described in this manual, must be performed by a trained and competent technical service engineer.

**Door handle adjustment (see Fig. 26)**

The stoves are equipped with an adjustable door latch. For correct operation, the stove door must be airtight when closed.

To adjust the door handle latch:

4. Loosen the locking nut.
5. Adjust the bolt in or out as required. The adjustment should be made in such way that when the handle is in its closed position the door is airtight and the handle vertical.
6. Re-tighten the locking nut.

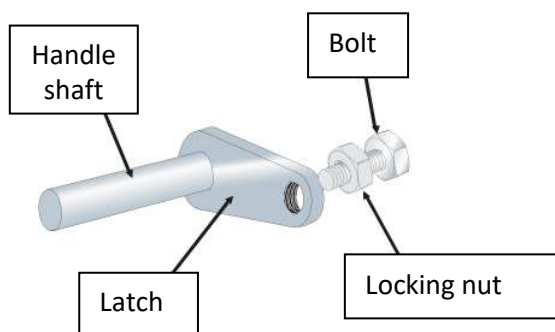


Fig. 26

**Brass fittings**

Any proprietary brass cleaner may be used to clean the brass on the stove, but care must be taken to ensure the polish does not come into contact with the stove enamel or the black cast finish, where it will leave a stain.

**Nickel fittings**

Any proprietary chrome or aluminium cleaner may be used to clean the decorave fins on the stove, but care must be taken to ensure the polish does not come into contact with the stove enamel or the black cast finish, where it will leave a stain.

**Soot**

When wood is burned slowly, it produces tar and other organic vapours, which combine with expelled moisture to form creosote. The creosote vapours condense in the relatively cool chimney flue of a slow burning fire. As a result, creosote residue accumulates on the flue lining. When ignited, this creosote makes an extremely hot fire.

The chimney connector and chimney should be inspected at least once every two months during the heating season to determine if a creosote build-up has occurred. The chimney connector must be in good condition and kept clean. If creosote has accumulated (1/8" (3 mm) or more) it should be removed to reduce the risk of a chimney fire. Experienced chimney servicing personnel should be consulted. Establish a routine for the fuel, wood burner and firing technique. Check daily for creosote build-up until experience shows how often you need to clean to be safe. Be aware that the hotter the fire, the less creosote is deposited. Weekly cleaning may be necessary in mild weather even though monthly cleaning may be enough in the coldest months.

**AT THE END OF THE SEASON**

Clean the unit, the flue outlet, and the chimney at the end of each heating season or more often if the use of the stove, or the fuel make it necessary. For cleaning purposes the baffle plates can be removed without any tools. This gives access to the cleaning flap of the smoke flue and it is even possible to reach the flue outlet. It also allows the removal of the catalyst box on the Catalytic Hybrid Woodbox variants for examination and sweeping of the flue.

Ashes shall be removed, and disposed of in a steel container with a tightly fitting lid and moved outdoors immediately. Remove all internal parts to expose any remaining ash and cinders and remove, close all the stove doors. If the room is damp, possibly place some absorbent crystals inside the stove or spray any internal metal surfaces with water repelling spray. Using a suitable oil lubricate all moving parts including door latches and handle shafts.

#### **Enamelled parts and repair**

Porcelain enamel, when heated to high temperature, is subject to crazing. Crazing is a normal occurrence when enamel is exposed to high temperatures. Your enamel finish will not be harmed nor will the function of the stove be impaired.

The enamel surface of the stove may become chipped if it is hit with a hard object such as a coal shovel or operating tool. Suitable cold enamel touch up paint may be purchased.

To prepare the surface remove any loose or flaking enamel finish and brush or vacuum the area to remove any dust and dirt.

If the touch up is supplied in a bowl shake vigorously for a minute to mix the contents. If supplied in a tube squeeze out some of the contents onto a clean sheet of paper and mix with a match stick as it may have become separated in the tube.

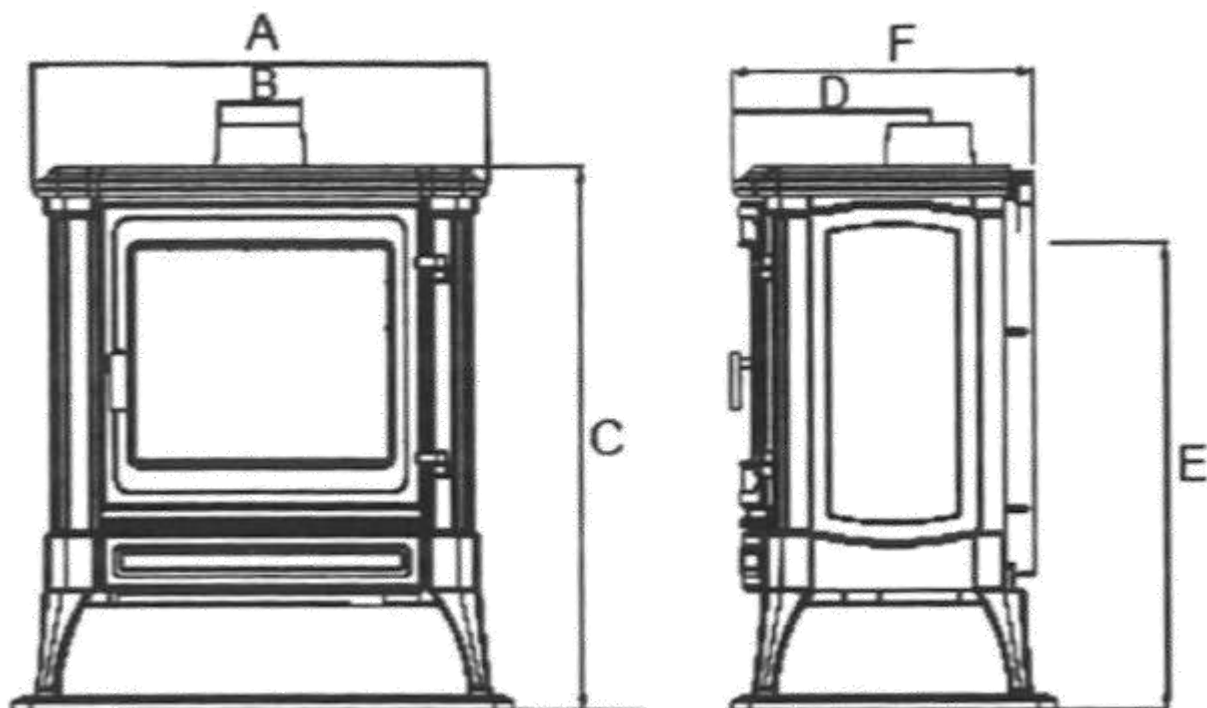
Apply a thin layer of touch up to the surface allowing it to dry before applying further layers to build the surface up to the surrounding enamel's height. Leave to dry before firing the stove.

## **6 – PRODUCT RECYCLING**

Your appliance is delivered packed in plastic and a cardboard box on a wooden pallet. You can use cardboard and wood as fuel for the first lightings of the appliance, or take it to a local recycling point. The plastic that protects the device must be taken to a specific local recycling point or center, it must not be disposed of in conventional waste dumpster.

All local regulations, including those that refer to national or European regulations, must be applied when recycling this device at the end of its useful life. The product should never be disposed of in conventional waste dumpster. Its appliance is made up of components made of cast iron, steel, glass, insulating materials and electrical material, which are assembled using screws and rivets. You can disassemble it and take it to a specific local recycling point or center. Glass should not be disposed of in conventional waste dumpster.

## 7. DIMENSIONS

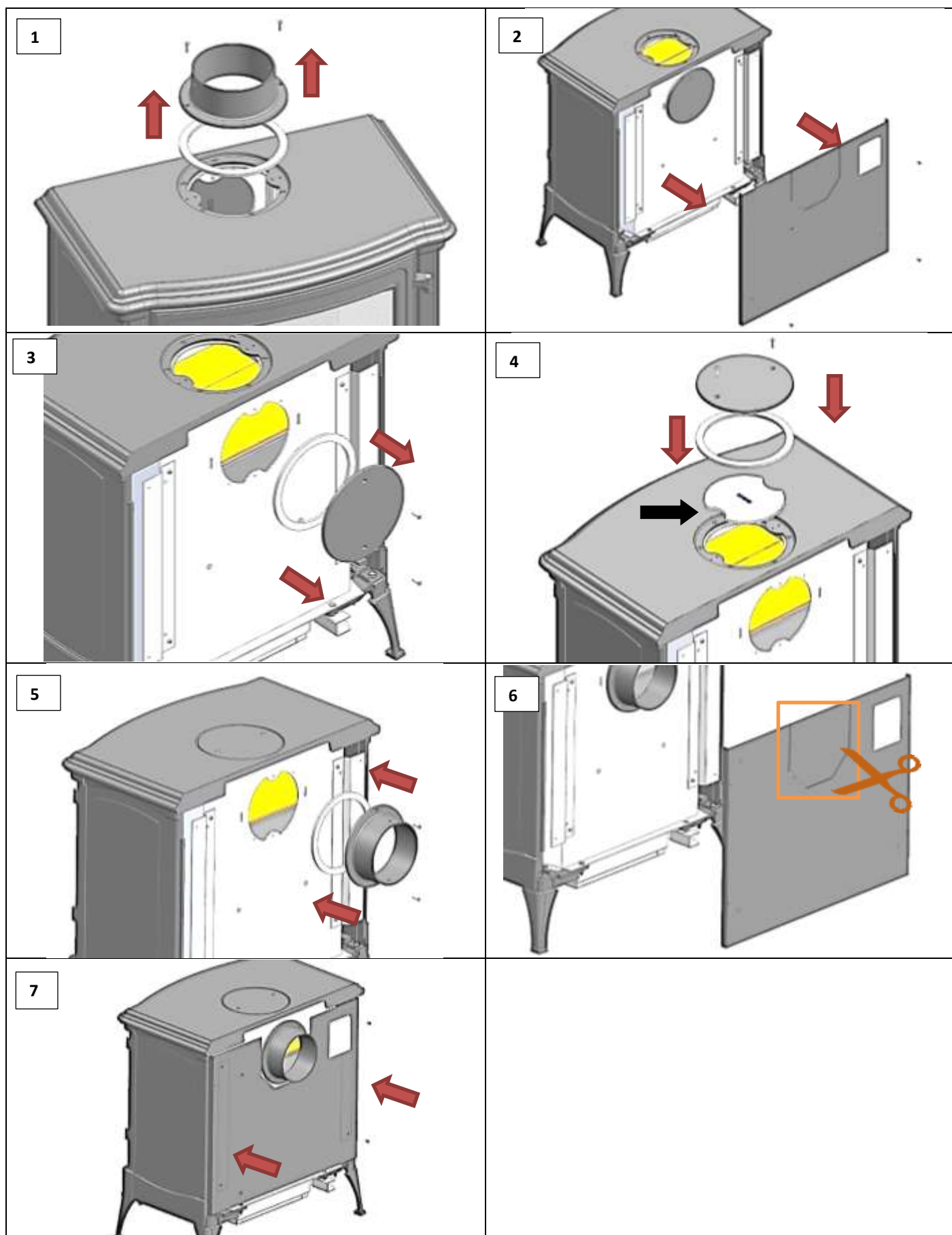


Model	A	B (int.)	C	D	E	F
H33	649	150	649	254	582	370

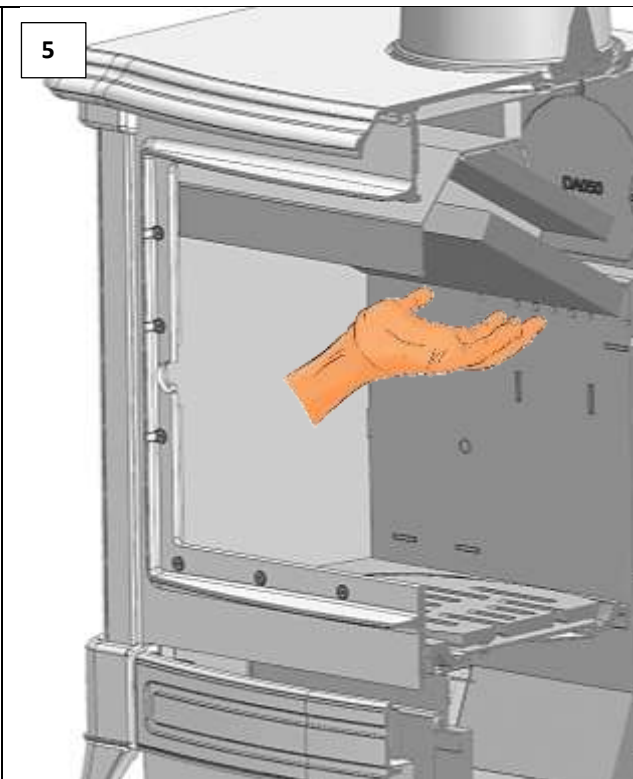
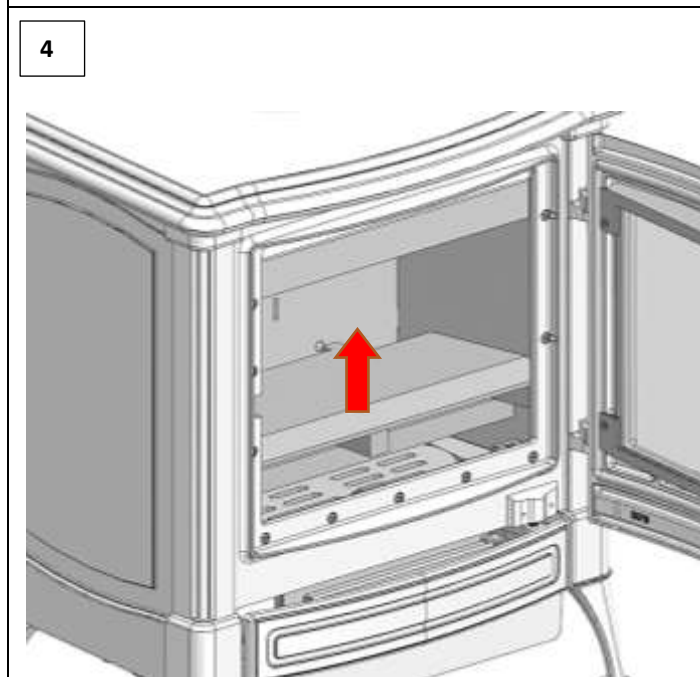
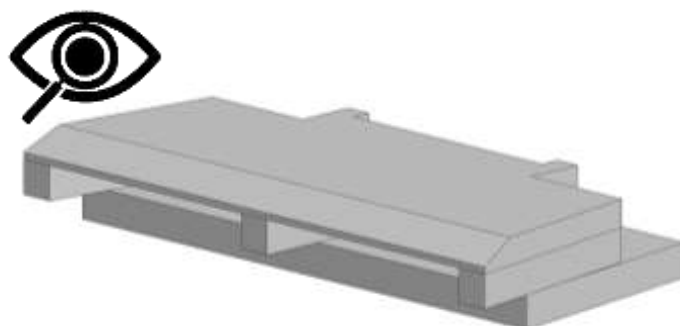
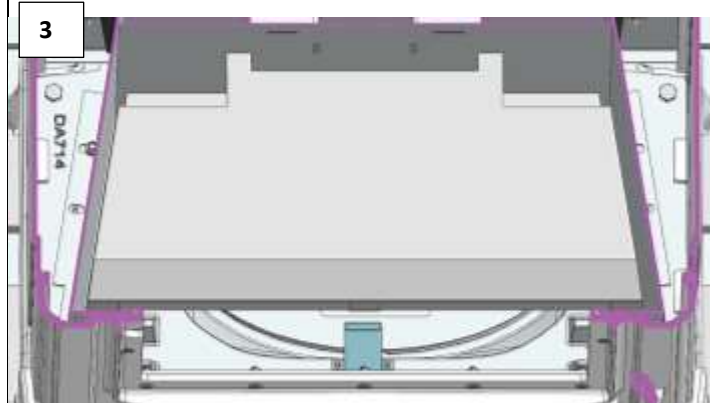
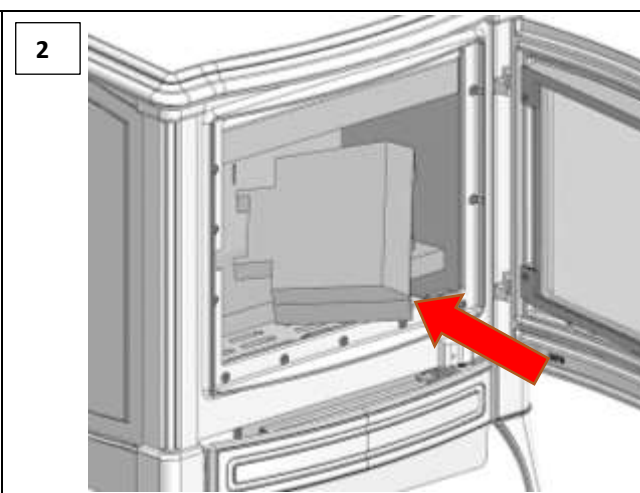
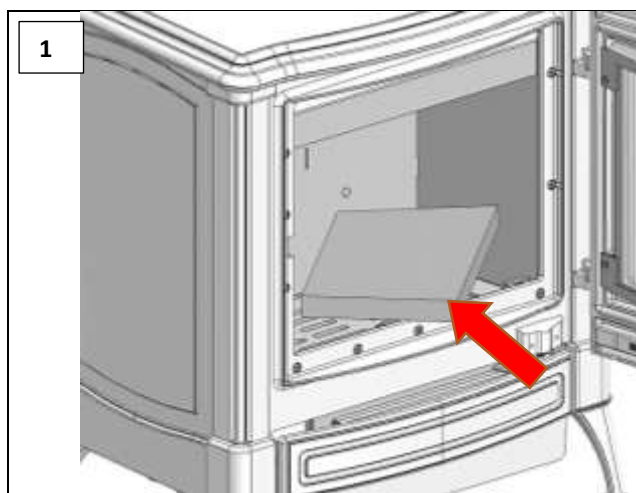
## 8. TECHINICAL SPECIFICATION

	S33 SE H33 SE
Puissance nominale / Nominale kracht / Potenza nominale / Nominal power / Potencia nominal (kW)	5,2
Température des gaz moyenne / Gemiddelde temperatuur van de gassen / Temperatura media gas / Average smoke temperature / Temperatura media de los gases (°C)	237
Débit massique des fumées / Rookgasmassastroom / Portata massima dei fumi / Caudal másico de los humos / Flue gas mass flow (g/s)	5,0
Émissions CO / CO uitstoten / Emissioni CO / CO emissions / Emisiones CO (13% O2 - Vol%)	0,10
Émissions CO / CO uitstoten / Emissioni CO / CO emissions / Emisiones CO (13% O2 - mg/m3)	1250
Particules / Stof / Particelle / Dust / Partículas (13% O2 – mg/m3)	11
Concentration NOx / NOx-concentratie / Concentrazione NOx / NOx concentration / Concentración NOX (13% O2 – mg/m3)	89
Concentration OGC / OGC-concentratie / Concentrazione OGC / OGC concentration / Concentración OGC (13% O2 – mg/m3)	17
Rendement / Rendement / Rendimento / Efficiency / Rendimiento (%)	82
Buse de fumées / Rookafvoerbuiss / Attacco scarico fumi / Smoke collar / Collarín de humos (Ø int mm)	150
Cheminée métallique / Metalen schoorsteen / Canna fumaria metallica / Metal chimney / Chimenea metálica (Ø int mm)	150
Hauteur de cheminée recommandée / Aanbevolen hoogte van de schoorsteen / Altezza consigliata canna fumaria / Recommended chimney height / Altura recomendada de chimenea (m)	5-6
Tirage recommandé / Aanbevolen trek / Tiraggio consigliato / Recommended draw / Tiro recomendado (Pa)	20
Sortie de fumées / Rookafvoer / Scarico fumi / Smoke outlet / Salida de humos	Vertical
Poids / Gewicht / Peso / Weight / Peso (Kg)	145 (S33) 143 (H33)
Entrée d'air depuis l'extérieur / Externe luchttoevoer / Entrata aria esterna / Outside air inlet / Entrada aire del exterior (Ø mm)	80

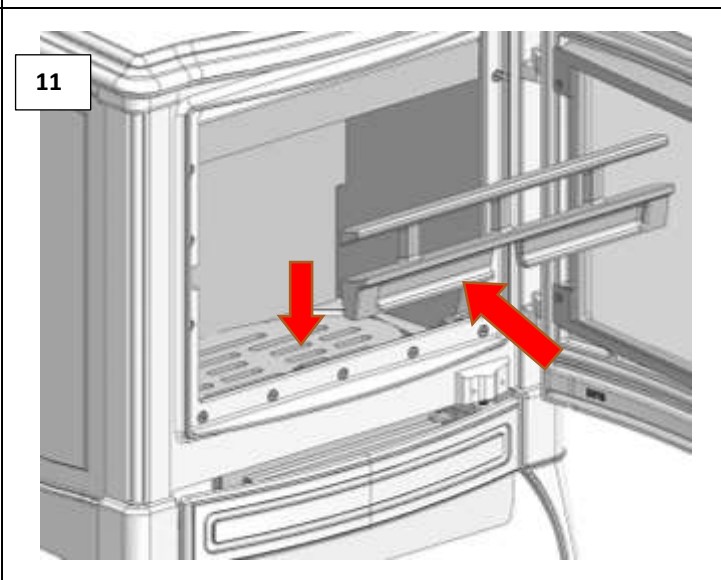
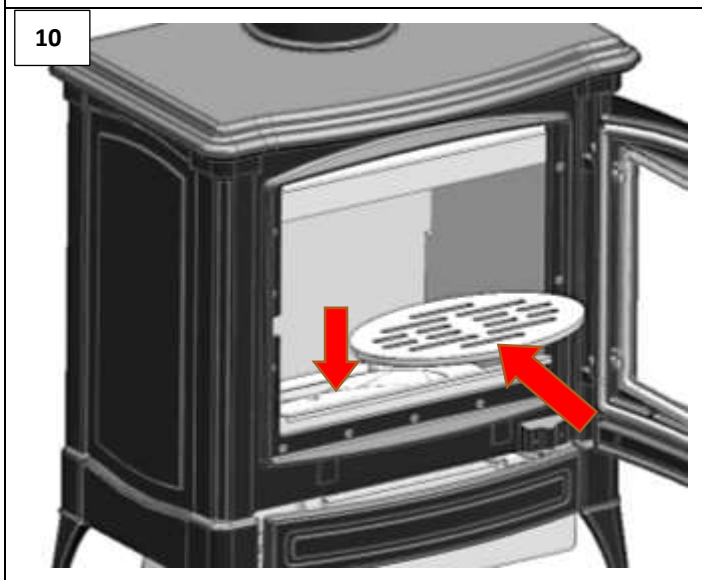
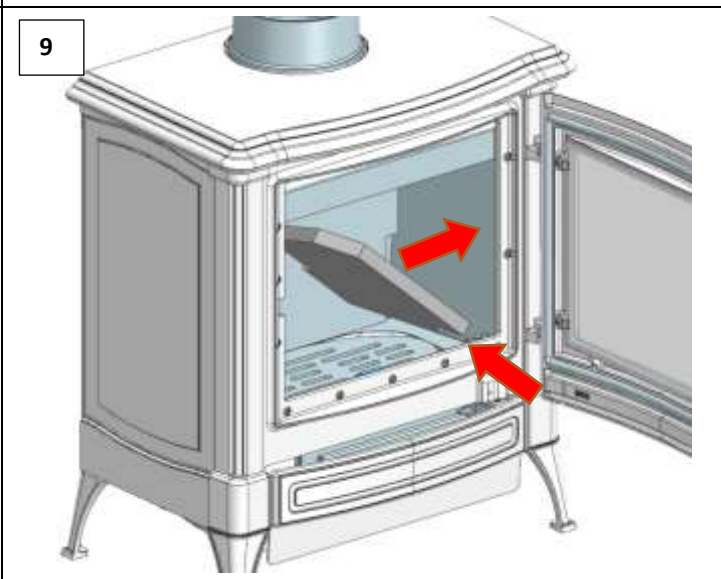
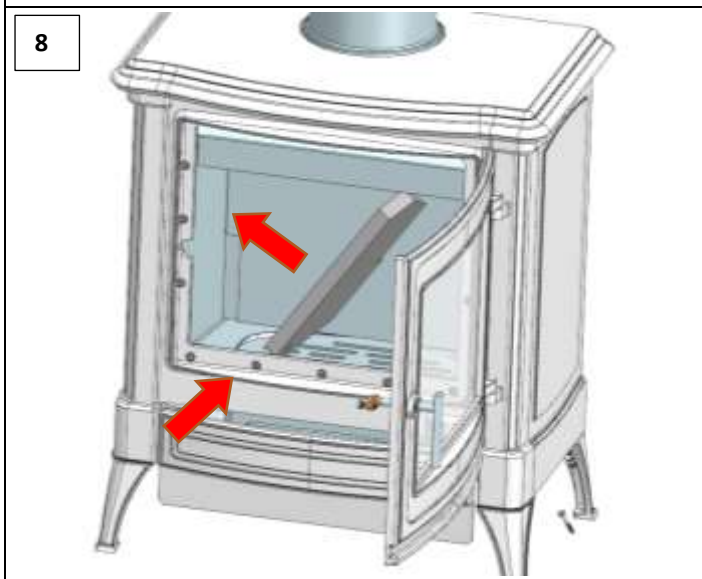
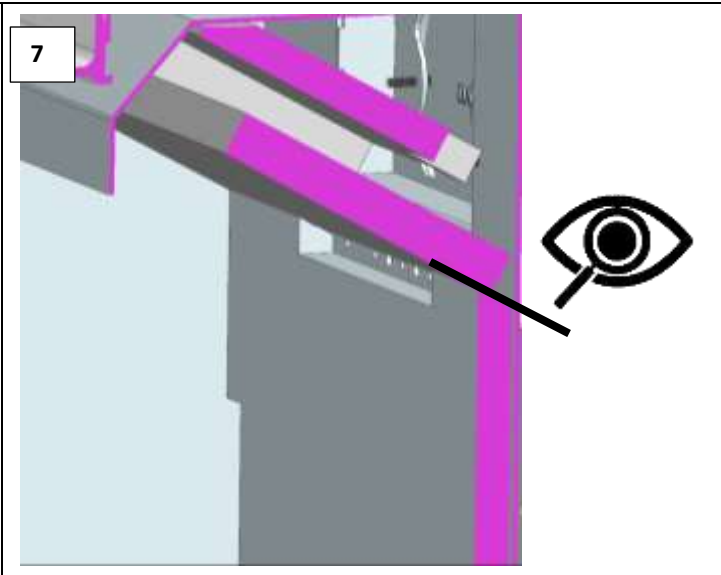
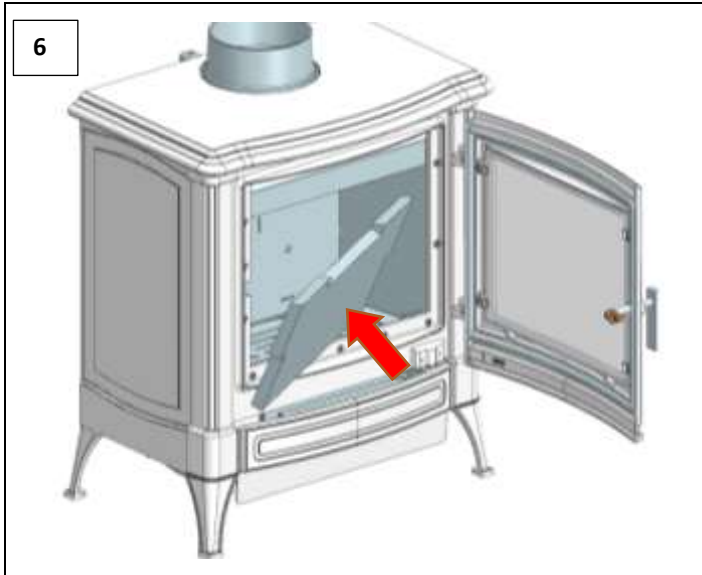
## INTERCHANGING THE TOP FLUE TO REAR FLUE OUTLETS -



## INTERIOR VERMICULITE INSTALLATION







# NESTOR MARTIN

SOTO DE LA MARINA - CANTABRIA

Apdo. de correos 208 SANTANDER

[www.nestormartinstoves.com](http://www.nestormartinstoves.com)