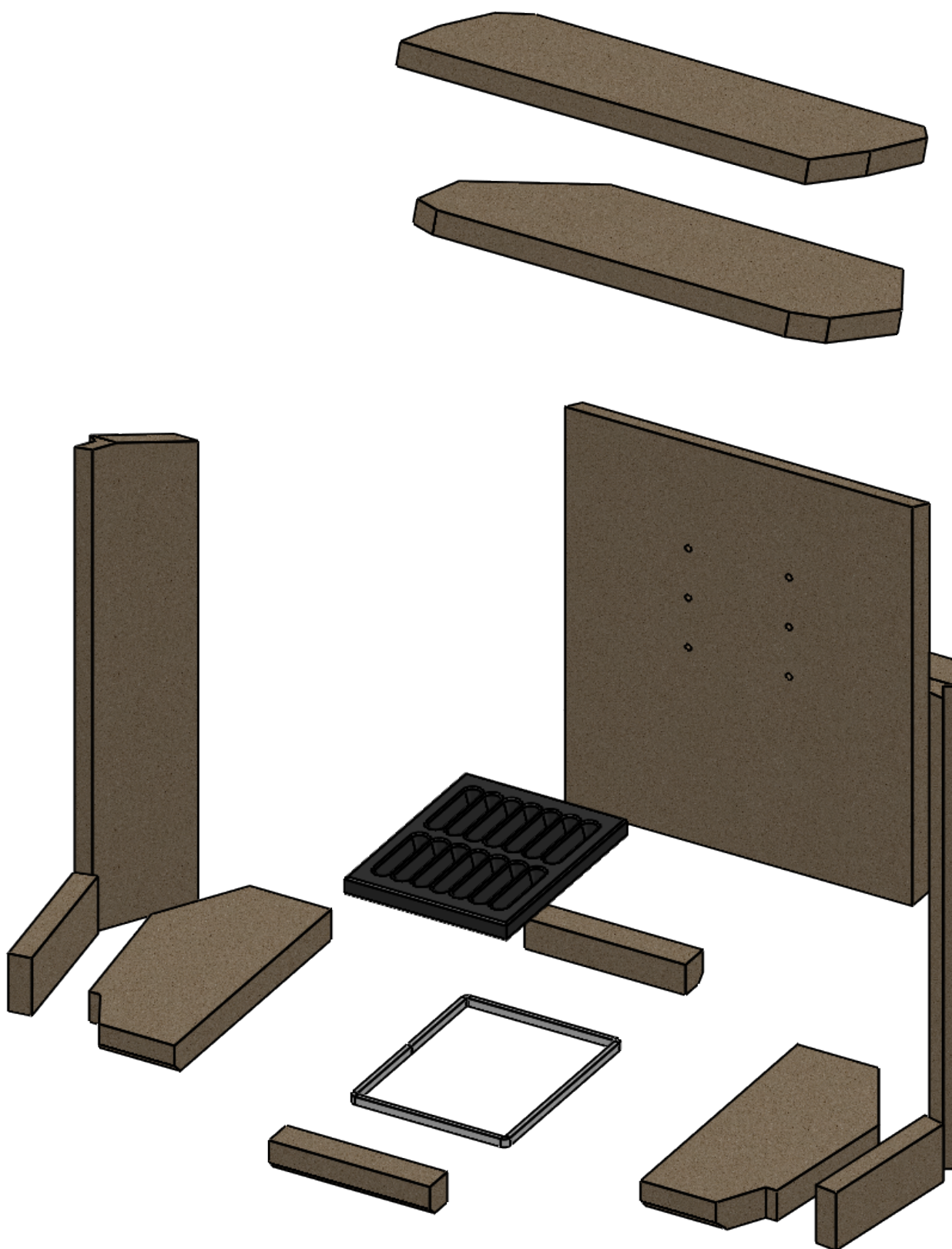
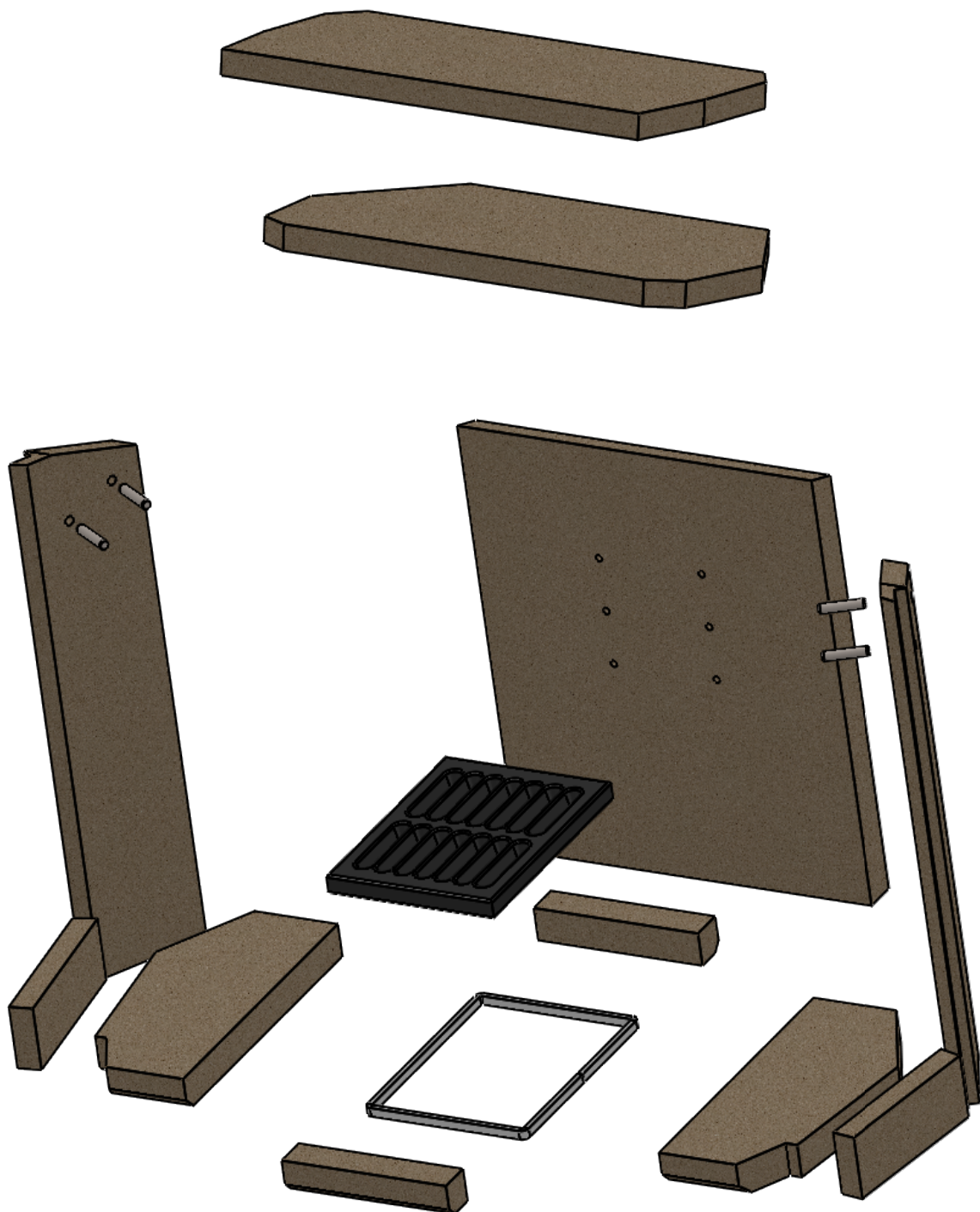


Brickset installation for Westfire Uniq 37 v1



Brickset installation for Westfire Uniq 37 v0

SIDE PINS SUPPORT BAFFLE





The chamber is empty, Clear and clean.

Upper baffle rests over lip at front

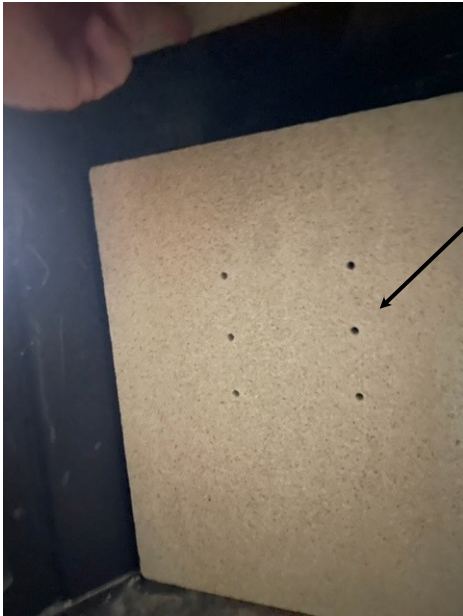
Baffle pushes up to bracket, this has to be held in position until side bricks are in place



Shaped section of upper baffle goes to rear of the stove



Upper Baffle in position resting on the front lip



Whilst holding upper baffle in position place rear brick in place. Make sure holes in the brick are aligned with holes in rear of the stove.



Fit side left, make sure it slots behind window brackets

Version 0, Has side bricks with 2 x 8mm holes and baffle pins supplied



Fit side right make sure it slots behind window brackets.

The 2 side bricks now support the upper baffle

Version 0, Has side bricks with 2 x 8mm holes and baffle pins supplied



Lift Baffle in to place, Lift front section over brackets above each window and push up back until it rests over the rear brick. Make baffle rest inside side brackets

Version 0, Place upper pins in place. Lift baffle into position with rear brick resting over rear vertical brick. Hold baffle in place and push 2 pins into the lower holes in the brick to support baffle.



Bricks in final position



Fit lower side bricks



Fit base bricks and Grate Support and grate

